

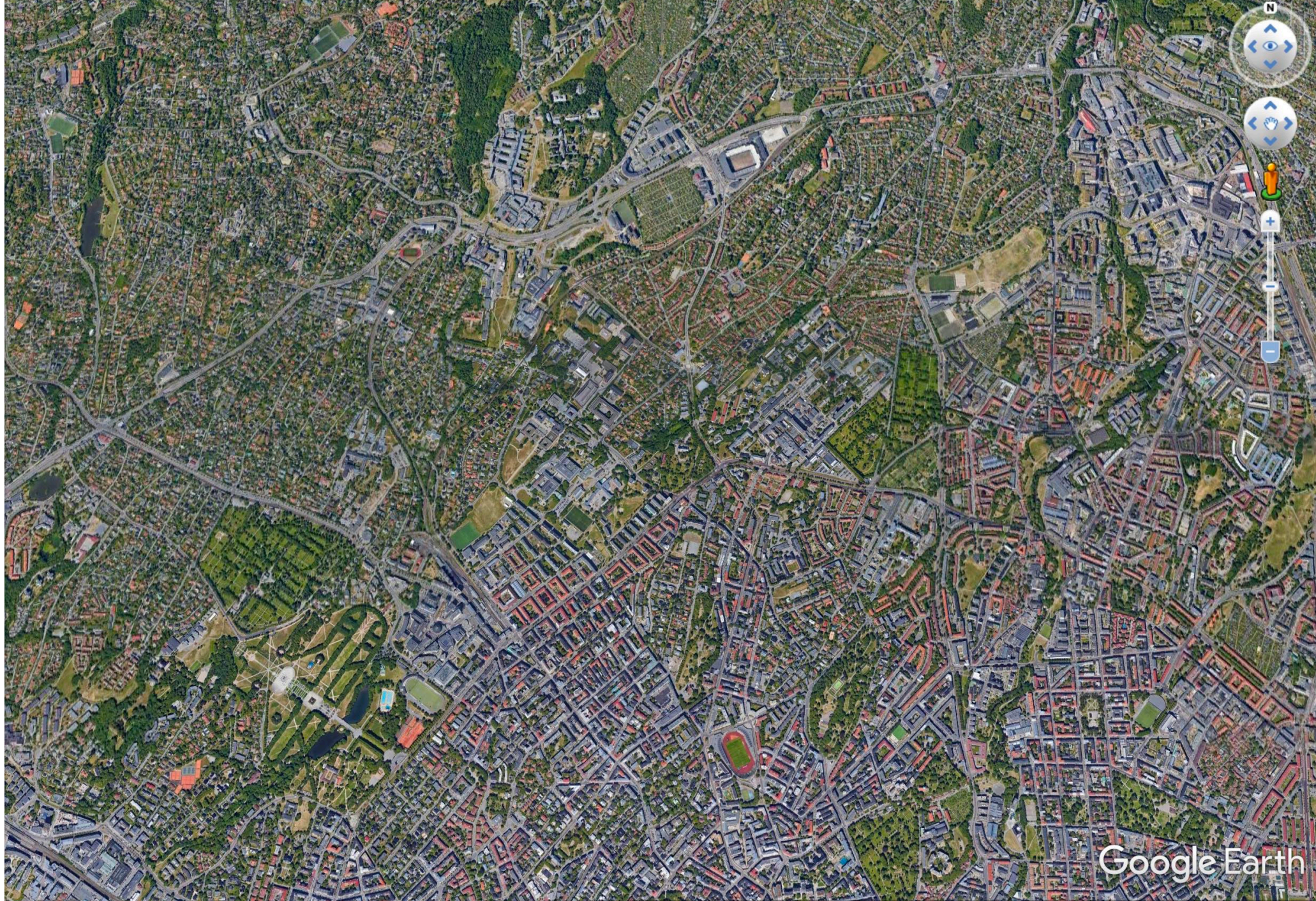



OSLO
GENERALPLAN
1930
REVIDERT 1940









Google Earth

1985

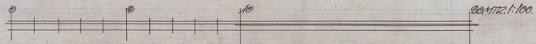
Imagery Date: 6/8/2018 59°56'26.14" N 10°46'36.31" E elev 0 m eye alt 4.91 km



Bl. No. 7 ULLEVAALS SØMEHUSNINGER
INDRENSKE ARBEJDE



SVD
FASADE MOT ØST OG ENDELIG PÅRIS



HEMTELT AF BØGEN
KRISTIANIA SEPT. 1842.

NICOLINE

GREATER LONDON PLAN MASTER PLAN 1944

RESIDENTIAL AREAS

RESIDENTIAL AREAS ARE CLASSIFIED INTO SEVEN CATEGORIES ACCORDING TO THE DENSITY OF HOUSING PER ACRE AND THE AMOUNT OF OPEN SPACE AND GREEN BELT REQUIRED FOR THE PROVISION OF SERVICES AND AMENITIES.

THE AMOUNT OF OPEN SPACE AND GREEN BELT REQUIRED FOR THE PROVISION OF SERVICES AND AMENITIES IS DETERMINED BY THE DENSITY OF HOUSING PER ACRE AND THE AMOUNT OF OPEN SPACE AND GREEN BELT REQUIRED FOR THE PROVISION OF SERVICES AND AMENITIES.

ALL RESIDENTIAL AREAS WITHIN THE AREA OF THE CITY OF LONDON, INCLUDING GREENBELT AND GREEN BELT AREAS, ARE CLASSIFIED INTO SEVEN CATEGORIES ACCORDING TO THE DENSITY OF HOUSING PER ACRE AND THE AMOUNT OF OPEN SPACE AND GREEN BELT REQUIRED FOR THE PROVISION OF SERVICES AND AMENITIES.

- RESIDENTIAL 20-100 HOUSING PER ACRE
- RESIDENTIAL 10-20 HOUSING PER ACRE
- RESIDENTIAL 5-10 HOUSING PER ACRE
- RESIDENTIAL 2-5 HOUSING PER ACRE
- RESIDENTIAL 1-2 HOUSING PER ACRE
- RESIDENTIAL 0.5-1 HOUSING PER ACRE
- RESIDENTIAL 0.1-0.5 HOUSING PER ACRE
- COMMERCIAL, ADMINISTRATIVE AND CULTURAL CENTRE OF GREATER LONDON

INDUSTRIAL AREAS

INDUSTRIAL AREAS ARE CLASSIFIED INTO TWO CATEGORIES ACCORDING TO THE DENSITY OF HOUSING PER ACRE AND THE AMOUNT OF OPEN SPACE AND GREEN BELT REQUIRED FOR THE PROVISION OF SERVICES AND AMENITIES.

- INDUSTRIAL
- INDUSTRIAL

OPEN LAND

OPEN LAND IS CLASSIFIED INTO SEVEN CATEGORIES ACCORDING TO THE DENSITY OF HOUSING PER ACRE AND THE AMOUNT OF OPEN SPACE AND GREEN BELT REQUIRED FOR THE PROVISION OF SERVICES AND AMENITIES.

ALL OPEN LAND WITHIN THE AREA OF THE CITY OF LONDON, INCLUDING GREENBELT AND GREEN BELT AREAS, ARE CLASSIFIED INTO SEVEN CATEGORIES ACCORDING TO THE DENSITY OF HOUSING PER ACRE AND THE AMOUNT OF OPEN SPACE AND GREEN BELT REQUIRED FOR THE PROVISION OF SERVICES AND AMENITIES.

- AGRICULTURAL LAND
- INDUSTRIAL GREEN BELT & SPECIAL RESERVE AREAS
- LOCAL GREEN BELT AND NON-AGRICULTURAL OPEN SPACE
- GENERAL OPEN SPACE
- RESERVE OPEN SPACE

MAJOR AIRPORTS

MAJOR AIRPORTS ARE CLASSIFIED INTO TWO CATEGORIES ACCORDING TO THE DENSITY OF HOUSING PER ACRE AND THE AMOUNT OF OPEN SPACE AND GREEN BELT REQUIRED FOR THE PROVISION OF SERVICES AND AMENITIES.

- MAJOR AIRPORT
- MAJOR AIRPORT

WATER

WATER AREAS ARE CLASSIFIED INTO TWO CATEGORIES ACCORDING TO THE DENSITY OF HOUSING PER ACRE AND THE AMOUNT OF OPEN SPACE AND GREEN BELT REQUIRED FOR THE PROVISION OF SERVICES AND AMENITIES.

- WATER
- WATER

ROADS

ROADS ARE CLASSIFIED INTO THREE CATEGORIES ACCORDING TO THE DENSITY OF HOUSING PER ACRE AND THE AMOUNT OF OPEN SPACE AND GREEN BELT REQUIRED FOR THE PROVISION OF SERVICES AND AMENITIES.

- ROAD
- ROAD
- ROAD

RAILWAYS

RAILWAYS ARE CLASSIFIED INTO TWO CATEGORIES ACCORDING TO THE DENSITY OF HOUSING PER ACRE AND THE AMOUNT OF OPEN SPACE AND GREEN BELT REQUIRED FOR THE PROVISION OF SERVICES AND AMENITIES.

- RAILWAY
- RAILWAY

